

Field work s

outdo



Chemical company takes on lax university lab safety

BY REBECCA TRAGER | 4 APRIL 2017 VIA CHEMISTRYWORLD.COM

Dow Chemical says academia can learn important lab safety lessons from industry. University chemistry

What You Work With Can Make You Sick

Follow safe lab practices—and don't bring germs home with you.



Don't carry dangerous germs from the laboratory.

Always wash your hands

Don't bring

personal items
out of the lab

Don't

eat
or drink



UNE Chemical Sharing Program

The UNE Chemical Sharing Program is a great way to reduce hazardous waste, reduce costs for your department, and have a positive environmental impact on campus. If you have any commonly used lab chemicals that you are thinking of disposing, please contact EHS so they can be listed in the next issues of EHS Lab Chatter as available for the UNE Chemical Sharing Program.

Chemicals currently available:

Pyridine 80mL (opened 2013)
Pentane, Chromasolv 700mL (opened 2008)
Methanol 700mL (opened 2008)
Chlorform 25mL (not sure when opened) - about 1/2 the bottle left
2-Propanol 90mL (not sure when opened)
Acetic Acid 80mL (opened 2013)
Formic Acid 100mL (opened 2013)
Tris 1Kg (opened 2010)

Contact us

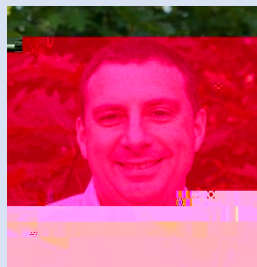


Ronnie Souza

UNE Extension

Cell:

Email:

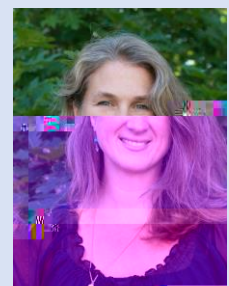


Peter Nagle

UNE Extension

Cell:

Email:



Jessica Tyre

UNE Extension

Cell:

Email:

Alethea Cariddi,

UNE Extension:

Email:

